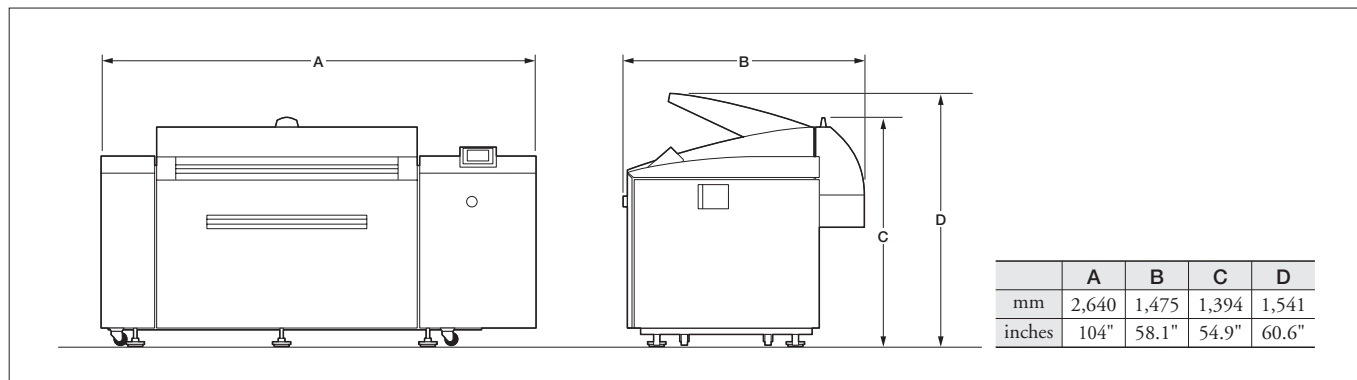
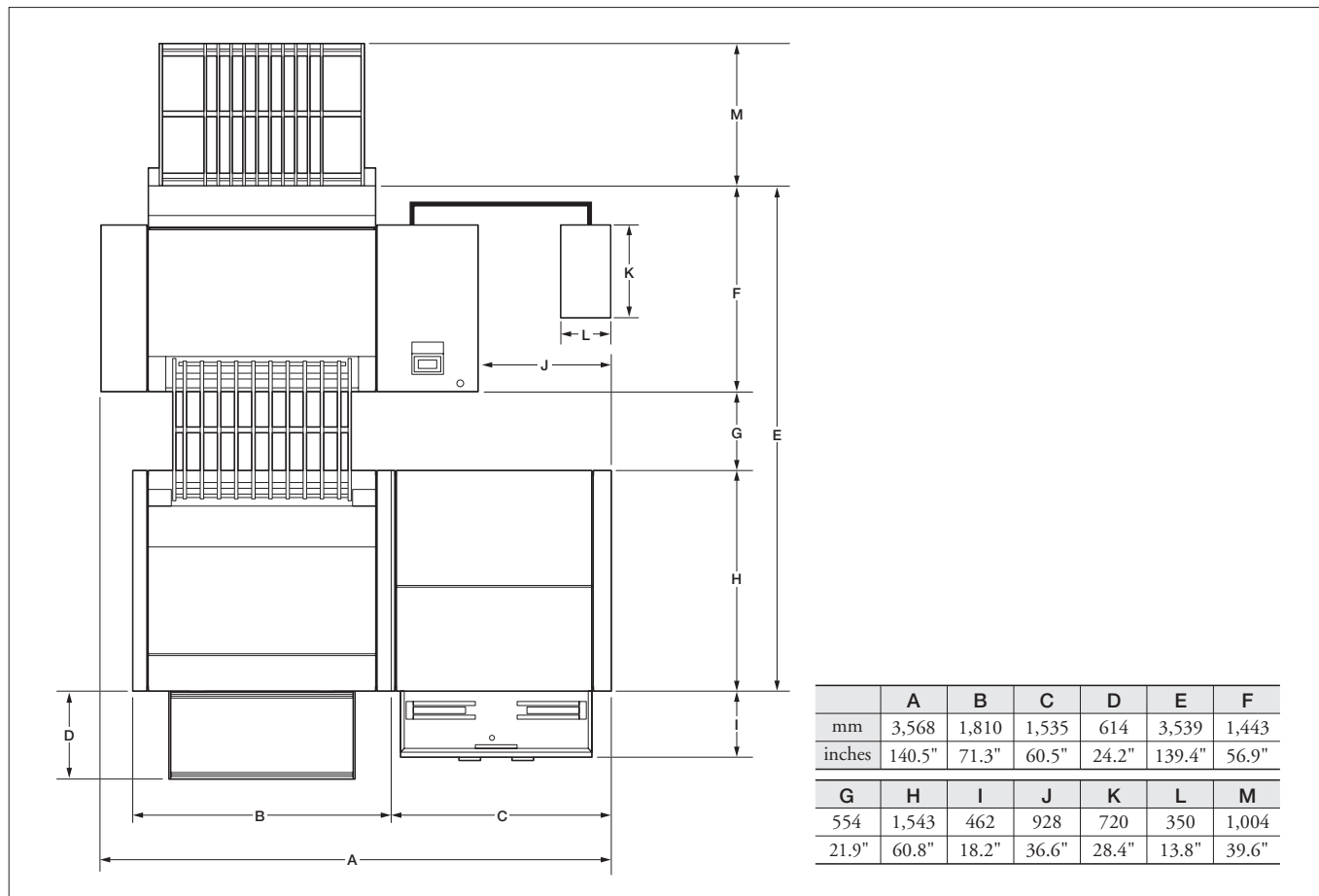


Dimensions



Floor plan



www.screen.co.jp/ctp_no1

For more information, please visit our web site.
You can see product movie on it!



DAINIPPON SCREEN MFG. CO., LTD.

HEAD OFFICE

• Teranouchi-agaru 4-chome, Horikawa-dori, Kamigyo-ku, Kyoto, 602-8585 Japan/Phone +81-75-414-7610/Fax +81-75-414-7608

DAINIPPON SCREEN GRAPHICS (USA), LLC

• 5110 Tollview Dr., Rolling Meadows, IL 60008, USA/Phone +1-847-870-7400/Fax +1-847-870-0149 www.screenusa.com

DAINIPPON SCREEN (DEUTSCHLAND) GmbH

• Mündelheimer Weg 39, 40472 Düsseldorf, Germany/Phone +49-211-472701/Fax +49-211-4727199

DAINIPPON SCREEN (U.K.) LTD.

• Michigan Drive, Tongwell, Milton Keynes, Buckinghamshire MK15 8HT, UK/Phone +44-1908-848500/Fax +44-1908-848501 www.screen.co.uk

DAINIPPON SCREEN (NETHERLAND) B.V.

• Souwerij 46, 1185 YK Amstelveen, Holland/Phone +31-20-4567900/Fax +31-20-4567805 www.screeneuropa.com

DAINIPPON SCREEN SINGAPORE PTE. LTD.

• 29, Kaki Bukit View, Kaki Bukit Techpark II, Singapore 415963/Phone +65-6749-3833/Fax +65-6749-9010 www.screen.sp.com.sg

DAINIPPON SCREEN (CHINA) LTD.

• Room 2001 - 2003, 20/F Cable TV Tower 9 Hoi Shing Road Tsuen Wan, N.T. Hong Kong/Phone +852-2953-0038/Fax +852-2755-8683

Beijing office/Phone +86-10-6708-9271, 8272, 3273/Fax +86-10-6708-9395

Shanghai office/Phone +86-21-3126-5122/Fax +86-21-5218-2199

Guangzhou office/Phone +86-20-3891-1112/Fax +86-20-3891-1036

DAINIPPON SCREEN (TAIWAN) CO., LTD.

• 4F No. 126-1, Ming Tsu West Rd., Taipei, Taiwan/Phone +886-2-25862711/Fax +886-2-25914367

DAINIPPON SCREEN (KOREA) CO., LTD.

• 10th Yonsel Bongnae B/D 48-3, 1Ga, Bongnae-Dong, Joong-Gu, Seoul 100-161, Korea/Phone +82-2-7766-786/Fax +82-2-7766-787

DAINIPPON SCREEN (AUSTRALIA) PTY. LTD.

• Suite 11, 2 Eden, Park Drive, Macquarie, NSW2133, Australia/Phone +61-2-9016-3400/Fax +61-2-9016-3425

Internet web site : www.screen.co.jp

www.screenusa.com

www.screeneuropa.com

• This brochure was made using SPEKTA 2 screening.

Partner:



REPROGRAF S.A.
ul. Wolska 88
01-141 Warszawa
Tel.: +48 22 539 40 00
www.reprograf.pl

We reserve the right to alter product design and specifications without prior notice.

No. 205-141E Printed in Japan 03-12 040FSI(R1-2)

PlateRite HD 8900Z/S/E

Thermal Plate Recorder



Creating a Future in Print

New flagship 8-Page Model Delivers Throughput of up to 67 Plates per Hour!

Speed

Efficient production with super-fast output

67 plates* per hour

* Z model

Quality

Remarkable quality

Max. resolution of 4,000 dpi*

* Option for S and E models.

Automation

Improved operability

Autoloading system

Environment

Safe for employees, gentle on environment

Environmentally conscious CtP

Speed

High-speed output of 67 plates per hour

The high-end PlateRite HD 8900Z features a 1,024-channel imaging head that utilizes GLV™ technology and is able to output 67 plates* per hour. Additionally, with A4 size 4-page plates (650 x 550 mm, 25.5" x 21.6"), it is capable of impressive high-speed output of 80 plates per hour. A single PlateRite HD8900Z can also replace output of A4 size 8-page or smaller plates using multiple CtP units. This makes processing easier to manage, and running costs and liquid waste are lower than ever.

The PlateRite HD 8900Z delivers the almost instantaneous response required for today's small lots and ultrashort deadlines, providing a new level of added value for clients. The

Quality

Creation of sharper halftone dots with the latest technology

In addition to its GLV-equipped imaging head, the PlateRite HD 8900 series uses screening options ranging from Screen's unique Spekta and Spekta 2 AM/FM hybrid screening through to high-end AM and FM screening. The result is superior image quality suitable for a variety of applications at a standard 2,400 dpi resolution. Imaging quality is also more reliable thanks to an auto-focus function.

High-resolution output of 4,000 dpi

The S and E models offer a 4,000 dpi high-resolution option that uses ultraprecise AM halftone dots. This option supports the creation of plates for extremely detailed output, including high-

S and E models also feature a 512-channel imaging head, with respective throughputs of up to 43 and 33 plates per hour.

* At 2,400 dpi, with 1,030 x 800 mm (40.5" x 31.5") plates.

Variety of plate sizes for different presses

The PlateRite HD 8900 series supports plates ranging from 304 x 305 mm (12" x 12.1") to 1,165 x 950 mm (45.8" x 37.4"). Compatibility with 6-mm leading and tailing edge clamps also enables output from a wider variety of presses. Simplified plate setting further improves operating ratios, boosting the productivity delivered by the series' high-speed output.

resolution art printing and accurate reproduction of the small text sizes required for bond and other certificate printing.

Compatibility with 3D lenticular mode (HD 8900Z: standard, HD 8900S/E: option)

Lenticular output mode, which performs step exposure ideal for lenticular production, will soon be available as an option. This mode eliminates the interference moiré seen with lenticular lines. It is optimal for the imaging of high-precision straight lines, such as those in bar codes. Installation of the 4,000 dpi option* also enables the output of high-resolution plates for 3D lenticular printing.

* HD 8900S/E: option, HD 8900Z: not available.



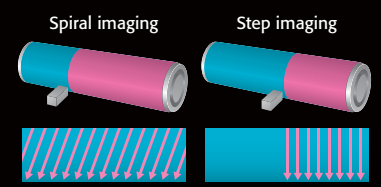
175 lpi at 2,400 dpi



700 lpi at 4,000 dpi (print sample)
*Not multi screening



Example of high-end lenticular production



3D lenticular mode specification

PlateRite HD 8900Z/S/E specifications

| Product Name | PlateRite HD 8900Z | PlateRite HD 8900S | PlateRite HD 8900E |
|------------------------|---|--|--|
| Model Name | PT-R8900 | | |
| Recording system | External drum | | |
| Light source | 1,024-channel laser diode | 512-channel laser diode | |
| Plate size | Maximum: 1,165 x 950 mm (45.8" x 37.4"); Minimum: 304 x 305 mm (12" x 12.1")*1 | | |
| Exposure size | Maximum: 1,165 x 938 mm (45.8" x 36.9") | | |
| Plate | Thermal aluminum plate | | |
| Lenticular imaging | Standard | Option | |
| Plate thickness | 0.15 to 0.3 mm (5.9 mil to 11.8 mil) [0.4 mm (15.7 mil)*2 available as an option] | | |
| Resolutions | 1,200*3/2,400/2,438/2,540 dpi | 1,200*3/2,400/2,438/2,540/4,000 dpi (4,000 dpi is only available when the high resolution option*4 is selected) | |
| Repeatability | ±5 µm*5 | | |
| Productivity *6 | 67 plates/hr at 2,400 dpi (1,030 x 800 mm/40.5" x 31.4" plates) 80 plates/hr at 2,400 dpi (650 x 550 mm/25.5" x 21.6" plates) | 43 plates/hr at 2,400 dpi (1,030 x 800 mm/40.5" x 31.4" plates) 55 plates/hr at 2,400 dpi (650 x 550 mm/25.5" x 21.6" plates) | 33 plates/hr at 2,400 dpi (1,030 x 800 mm/40.5" x 31.4" plates) 44 plates/hr at 2,400 dpi (650 x 550 mm/25.5" x 21.6" plates) |
| Interface | S-PIF | | |
| Punch systems | Screen, Heidel, Heidelbach W, Protocol, and Komori punch systems are standard; all others are special orders. (Up to twelve individual punch blocks can be selected and mounted as an option, depending on the plate sizes and printing press types being used.) | | |
| Dimensions (W x D x H) | Main unit: 2,640 x 1,475 x 1,394 mm (104" x 58.1" x 54.9")(blower unit is internal) Chiller unit: 350 x 720 x 720 mm (13.8" x 28.4" x 28.4") | | |
| Weight | Main unit: 1,115 kg (2,530 lb); Chiller unit: 63 kg (138.6 lb) | | |
| Power requirements | Main unit: Single phase 200 V to 240 V, 16 A, 3.2 kW Chiller unit: Single phase 200 V to 240 V, 4 A, 0.7 kW [SA-L and MA-L are supplied by main unit.] | Main unit: Single phase 200 V to 240 V, 16 A, 3.2 kW Chiller unit*7: Single phase 200 V to 240 V, 3 A, 0.6 kW [SA-L and MA-L are supplied by main unit.] | |
| Environment | Recommended: 21 to 25°C (69.8 to 77°F); Required: 18 to 26°C (64.4 to 78.8°F); Relative humidity: 40 to 70% (no condensation) | | |
| Required options *8 | MA-L8900, SA-L8900, plate insertion table | | |
| Options | Plate transport system to connect with plate processor (built-in bridge, AT-T8001R, AT-M8001), various printing press punches, support for 0.4 mm (15.7 mil) thickness, high resolution (4,000 dpi support)*4, lenticular printing plate output*4, air filter unit (AF-180N), upgrade to Z or S specifications. | | |
| Applicable standard | Main unit: Approved UL, CSA, Declared CE Chiller unit: Approved UL, CSA, Declared CE | | |

*1 Plates wider than 590 mm (23.3") and narrower than 610 mm (24") cannot be used. *2 Plates that are 0.4 mm (15.7 mil) thick must be 900 x 770 mm (35.5" x 30.4") or larger.

*3 1,200 dpi uses 2,400 dpi double dots. *4 Option must be selected before the unit is shipped from the factory. *5 Over four consecutive exposures on one plate at 23°C (73.4°F) and 60% relative humidity.

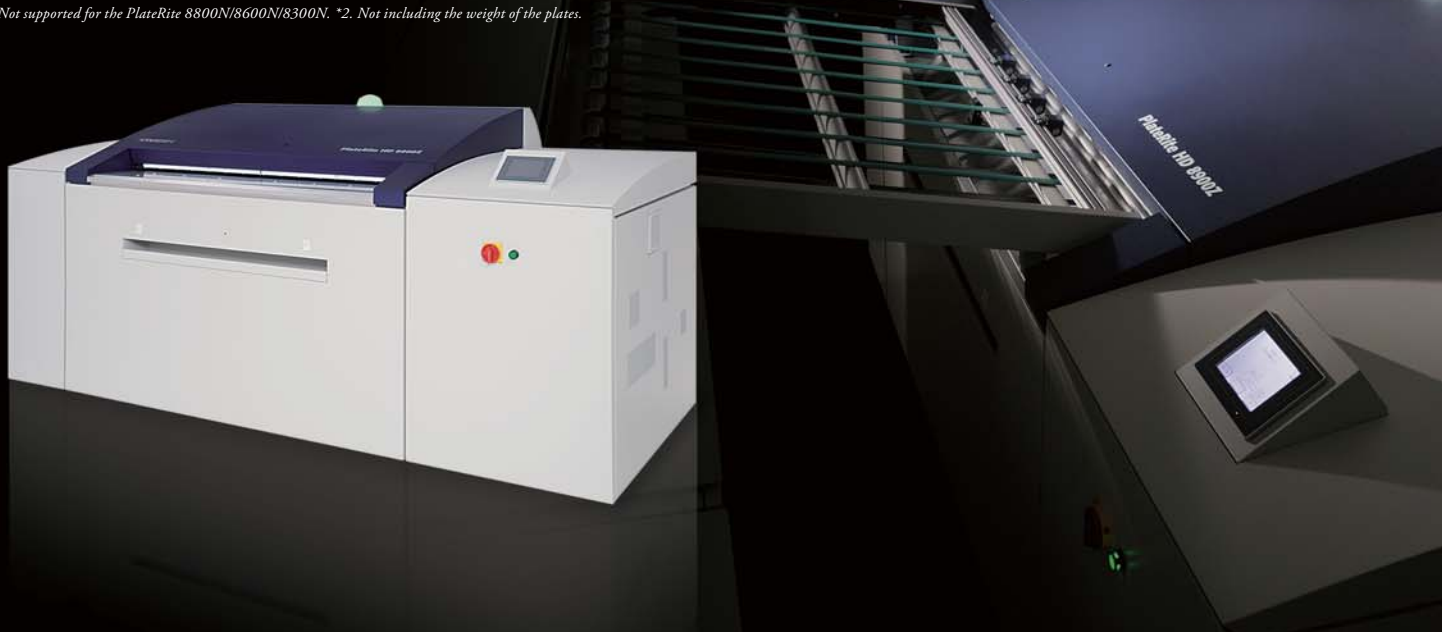
*6 This value is for when an autoloader is connected. Productivity may vary depending on the sensitivity of the plate. *7 The North American specifications may be single phase 200/208/220/230/240 V, 8 A, 1.4 kW.

*8 One of the options must be selected. Consult a Screen representative regarding throughput when the plate insertion table is chosen.

Autoloader specifications

| Product Name | SA-L8900 | MA-L8900 |
|------------------------|--|---|
| Compatible models*1 | PlateRite HD 8900Z/S/E | |
| No. of cassettes | 1 | Up to 5 cassettes (3 cassettes as standard) |
| Cassette capacity | 100 plates (0.15 to 0.3 mm thickness) 75 plates (More than 0.3 mm thickness) | 100 plates per cassette (0.15 to 0.3 mm thickness) 75 plates per cassette (More than 0.3 mm thickness) |
| Plate size | Maximum: 1,165 x 950 mm (45.8" x 37.4"); Minimum: 304 x 305 mm (12" x 12.1") | |
| Plate thickness | 0.15 to 0.4 mm (5.9 mil to 15.7 mil) | |
| Dimensions (W x D x H) | 1,827 x 2,351 x 1,530 mm (72" x 92.6" x 60.3") | 3,345 x 2,351 x 1,530 mm (131.7" x 92.6" x 60.3") |
| Weight*2 | 600 kg (1,320 lb) | 1,088 kg (2,393.6 lb) |
| Power requirements | Supplied by main unit | |
| Environment | Recommended: 21 to 25°C (69.8 to 77°F); Required: 18 to 26°C (64.4 to 78.8°F); Relative humidity: 40 to 70% (no condensation) | |
| Options | Additional carrier-type cassette (with dustproof cover) Left layout kit | Additional cassette Left layout(Factory option) |

*1. Not supported for the PlateRite 8800N/8600N/8300N. *2. Not including the weight of the plates.



PlateRite HD 8900Z/S/E

Automation

Autoloader maximizes productivity



An autoloader system can be installed to automate the entire platemaking process, from plate loading through imaging and transport to developing. The autoloader enables extended periods of continuous operation and significantly increases both productivity and press operating ratios.

Loading of plates during processing

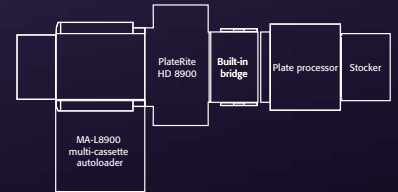
The MA-L8900 allows plates to be loaded into the cassette during continuous operation. This avoids downtime when additional plates are required and maximizes productivity and press operating ratios.



The ergonomic design ensures easy operation even when adding plates to cassettes.

MA-L8900 multi-cassette autoloader

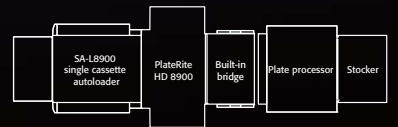
The MA-L8900 comes standard with three plate cassettes (up to five as an option) and full automation of both plate supply and cassette switching. Each



cassette holds up to 100 plates,* for a maximum of 500 plates stored in the autoloader. Even if different plate sizes are loaded into separate cassettes, the autoloader flexibly switches between the cassettes as required. Loading all cassettes with the same plate size enables extended periods of continuous operation. * For 0.3-mm plates

SA-L8900 single-cassette autoloader

The SA-L8900 features a single cassette that holds up to 100 plates*, as well as automatic detection and removal of interleaf paper. Its transport system only contacts the rear side of a plate, preventing damage to the sensitive emulsion side.

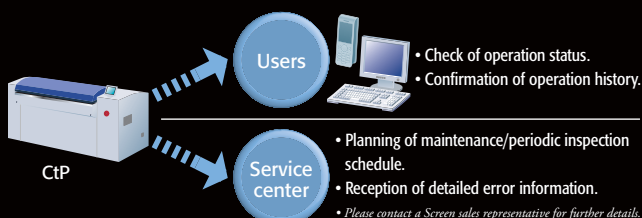


Manual loading is also possible, giving operators the flexibility to select plate sizes as required. * For 0.3-mm plates

Remote monitoring function

• Constant checking of CtP status from a remote location

CtP operating conditions and output history can easily be checked from a remote location via Web browser or email*. An external PC can also be effectively used as a substitute operation panel, allowing users at remote locations to make CtP settings and send commands. In addition, inclusion of a self-diagnosis function allows the confirmation of correct operation of the CtP and autoloader units. This provides straightforward assessment of required parts if a problem occurs, enabling rapid recovery of the equipment. Emails* are also automatically forwarded to a service center,



allowing an in-depth understanding of the operation status of the equipment. This information can be used during maintenance, repairs, and periodic inspections, ensuring the system remains in optimal condition at all times (support contract required).

* Can be forwarded to up to five email addresses

• Minimization of plate exchange/replacement times

If an autoloader is connected, the number of plates remaining in the cassettes is monitored in real time. When there are only a few plates left, an instruction to prepare for cassette replacement can be displayed on either the Web browser or operation panel. As cassettes can be moved to the plate insertion position from a remote location, the time required for plate exchange and replacement is minimized. This contributes to the achievement of an even higher CtP operation rate.

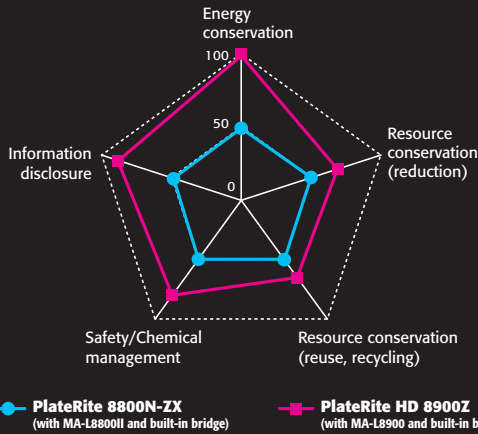


Environment

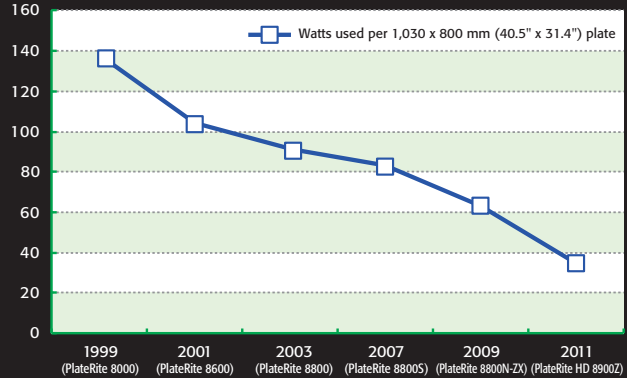
Gentle on the environment

Screen assesses the environmental impact of all its products as a form of design review. The PlateRite HD 8900 series has been developed with the goals of minimizing energy use and environmental impact while maximizing safety.

- Energy use during operation has been cut by up to 41%.*
- A new power-saving mode allows energy savings of up to 88%* during idling.
- The low-impact design conforms to RoHS environmental standards.
- All models are compatible with chemical-less plates from a range of manufacturers.



Trends in PlateRite 8000 series electricity consumption (Screen measurements)



The PlateRite series supports all types of chemical-less plates sold by plate makers. This reduces both the electricity consumption and chemical volume used by the developing unit after imaging as well as the ink volume used when Spekta 2 AM/FM hybrid screening is applied. These features demonstrate the significant progress of Screen's environmental efforts. In addition, the latest

PlateRite HD8900 models for the high-demand A4-8 page size have been developed with even greater emphasis on environmental concerns. With the PlateRite HD8900Z, power consumption during operation has been reduced by up to 41 percent per plate,* while the installation of a new power saving mode decreases power consumption during standby by 88 percent.*

* As power consumption levels are also affected by the operating environment and other external factors, the above values cannot be guaranteed.
Comparison of the PlateRite HD 8900Z and PlateRite 8800N-ZX when an MA-L and built-in bridge are connected. The conditions of a room temperature of 25°C (77°F) and during operation are for a resolution of 2,400 dpi and plate size of 1,030 x 800 mm (40.5\"/>

